

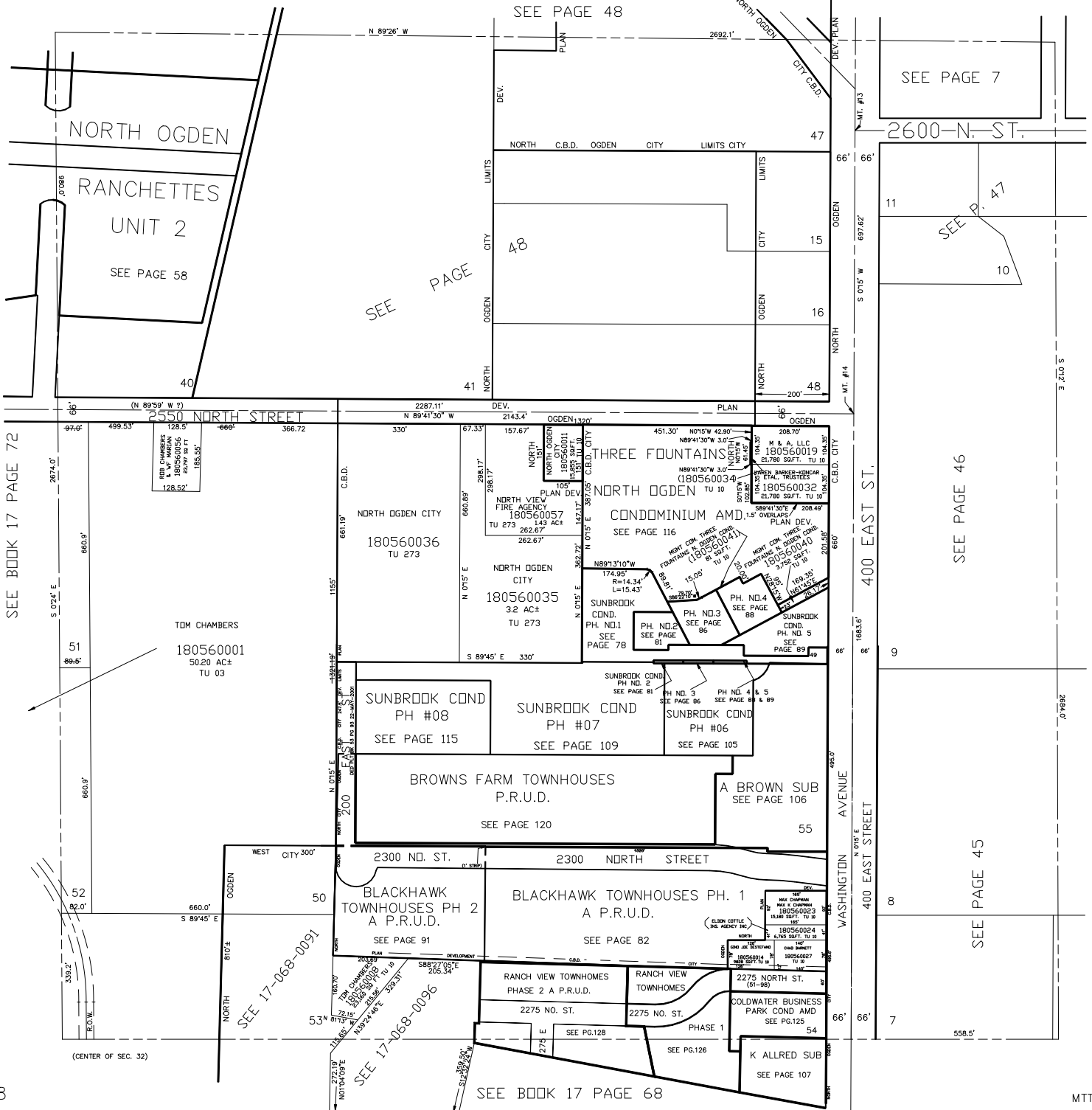
PART OF THE N.E. 1/4 OF SECTION 32, T.7N., R.1W., S.L.B. & M.

NORTH OGDEN

LOTS 49 TO 53 PLAT B
IN NORTH OGDEN CITY

SCALE 1" = 200'

TAXING UNIT: 03, 10, 273



SEE BOOK 17 PAGE 72

SEE PAGE 48

SEE PAGE 7

SEE PAGE 58

SEE PAGE 116

SEE PAGE 115

SEE PAGE 109

SEE PAGE 105

SEE PAGE 120

SEE PAGE 106

SEE PAGE 91

SEE PAGE 82

SEE PG.128

SEE PG.126

SEE PAGE 107

SEE PAGE 46

SEE PAGE 45

SEE BOOK 17 PAGE 72

SEE BOOK 17 PAGE 68